

# TWO BEDROOM COTTAGE

**4 Tennant Square, Plot T03. Audley Scarcroft Park,  
Scarcroft Estate, Leeds, West Yorkshire LS14 3HS  
0800 093 8181**

## Property specifications:

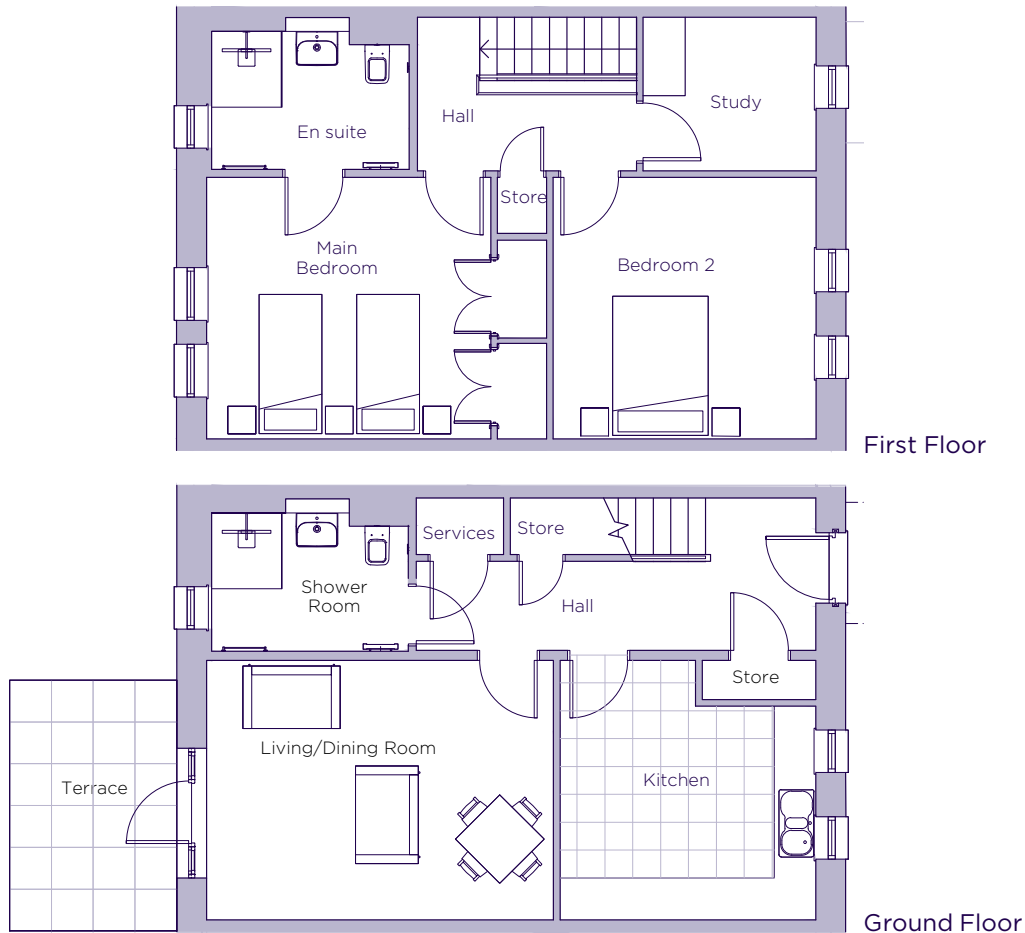
- Triple-aspect cottage
- Large double bedroom with en suite shower room and built-in double wardrobes
- Second double bedroom
- Modern Nobilia kitchen and integrated appliances
- Open plan kitchen and living space with room for dining table
- Bathroom and en suite fitted with elegant white Geberit sanitaryware
- Terrace accessible from living room
- Generous storage cupboards

Please see the village brochure and key facts for further information.

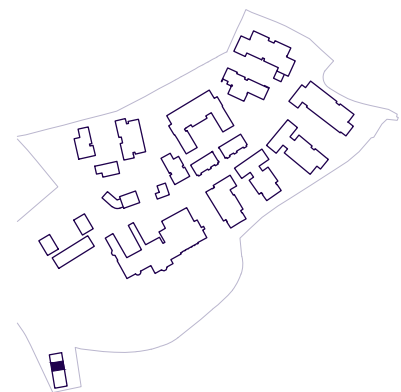


# THE LAYOUT

**4 Tennant Square, Plot T03. Audley Scarcroft Park,  
Scarcroft Estate, Leeds, West Yorkshire LS14 3HS**



Internal Measurements	Metric (m)	Imperial (ft)
Kitchen	3.73 x 3.68	12'3" x 12'1"
Living/Dining Room	4.98 x 3.73	16'4" x 12'3"
Main Bedroom	4.08 x 3.76	13'5" x 12'4"
Bedroom 2	3.78 x 3.76	12'5" x 12'4"
Study	2.49 x 2.21	8'2" x 7'3"
Terrace (approx)	3.60 x 2.40	11'10" x 7'10"



These floor plans are illustrative and for marketing purposes only. Maximum measurements are shown with longer dimension quoted first. Dimensions are quoted for the main area of the room only. Built-in wardrobes not included in the overall room dimensions. Furniture shown to illustrate possible room layouts and not included in sale. Designs vary according to plot. All details should be checked at the Sales Office. July 2022.